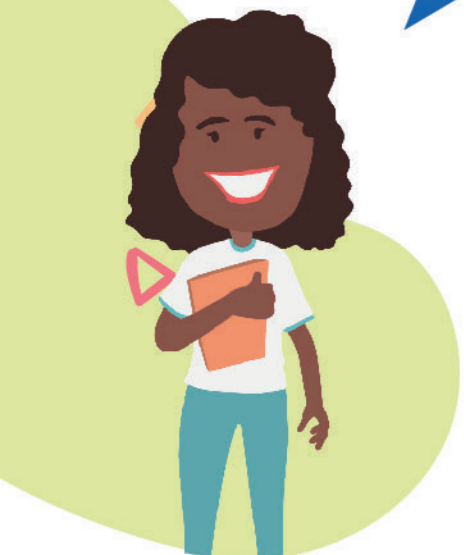


GEOGRAFIA - ENSINO MÉDIO - 2ª EDIÇÃO - 2020



1ª SÉRIE

CONTEÚDOS	ONDE ENCONTRO
Análise e interpretação de dados geográficos (mapas, plantas, cartas, etc.)	Aula 8 <a href="https://drive.google.com/file/d/19aCKixCuBUC3siNnwrrjBixXAkTfNQ77_/view">https://drive.google.com/file/d/19aCKixCuBUC3siNnwrrjBixXAkTfNQ77_/view</a>  Aula 9 <a href="https://drive.google.com/open?id=1YO2Ji5xtlrOinTC-nUyxPeOHqFcnO3_m">https://drive.google.com/open?id=1YO2Ji5xtlrOinTC-nUyxPeOHqFcnO3_m</a>
Regionalização geográfica e dinâmica social no espaço urbano e rural	Aula 13 <a href="https://drive.google.com/open?id=1jl2s7iO2zg_ZUMqoNG4TnlAmPI6PTqhQ">https://drive.google.com/open?id=1jl2s7iO2zg_ZUMqoNG4TnlAmPI6PTqhQ</a>  Aula 14 <a href="https://drive.google.com/open?id=1J_VtV7f9BtRvNb_b2YjUjdCxaA1SYyw9">https://drive.google.com/open?id=1J_VtV7f9BtRvNb_b2YjUjdCxaA1SYyw9</a>
Ocupação e formação territorial	Aula 01 <a href="https://drive.google.com/file/d/1fq4Z8HiYk9WOu1OabBvDFTaHoBt5HLCn/view?usp=sharing">https://drive.google.com/file/d/1fq4Z8HiYk9WOu1OabBvDFTaHoBt5HLCn/view?usp=sharing</a>
Impactos ambientais (poluição hídrica, atmosférica, pedológica, etc.)	Aula 20 <a href="https://drive.google.com/file/d/1WkKwVRJzBWIPVr2TF31IG_FKe1Szveec/view?usp=sharing">https://drive.google.com/file/d/1WkKwVRJzBWIPVr2TF31IG_FKe1Szveec/view?usp=sharing</a>  Aula 21 <a href="https://drive.google.com/file/d/1zr8uez691RuWrlV8zfXoR1H9Qq3yAB2C/view?usp=sharing">https://drive.google.com/file/d/1zr8uez691RuWrlV8zfXoR1H9Qq3yAB2C/view?usp=sharing</a>
Uso dos recursos naturais renováveis e não renováveis	Aula 14 <a href="https://drive.google.com/open?id=1J_VtV7f9BtRvNb_b2YjUjdCxaA1SYyw9">https://drive.google.com/open?id=1J_VtV7f9BtRvNb_b2YjUjdCxaA1SYyw9</a>
Atividades humanas e transformação do espaço geográfico	Aula 18 <a href="https://drive.google.com/open?id=1Ed1IKA0sgNuTRQsJ2Vqa--Bs9LY6OAbg">https://drive.google.com/open?id=1Ed1IKA0sgNuTRQsJ2Vqa--Bs9LY6OAbg</a>  Aula 19 <a href="https://drive.google.com/file/d/1-RtHoATgi6B2QO_dXPgP3sArTKI5Rh2G/view?usp=sharing">https://drive.google.com/file/d/1-RtHoATgi6B2QO_dXPgP3sArTKI5Rh2G/view?usp=sharing</a>



## 2ª SÉRIE

CONTEÚDOS	ONDE ENCONTRO
Representações cartográficas (mapa, carta, planta, etc.)	Aula 10 <a href="https://drive.google.com/open?id=1SOjQUjyL4aADRx6HUIhwtJYoOcYXQzc6">https://drive.google.com/open?id=1SOjQUjyL4aADRx6HUIhwtJYoOcYXQzc6</a>
Dinâmicas populacionais no espaço urbano e rural	Aula 8 <a href="https://drive.google.com/file/d/1tJT6TQiGAJToJiRL69kWPSIVoFvh1-il/view">https://drive.google.com/file/d/1tJT6TQiGAJToJiRL69kWPSIVoFvh1-il/view</a>  Aula 9 <a href="https://drive.google.com/open?id=1ylzjSuGdAYPTH-CpXNDY26eJXwEzA0lk">https://drive.google.com/open?id=1ylzjSuGdAYPTH-CpXNDY26eJXwEzA0lk</a>
Geopolítica da fome	Aula Paraná Aula 15 <a href="https://drive.google.com/open?id=1SVE-TbqmcPLQ89tIXtF4Pp0LXjqcb656">https://drive.google.com/open?id=1SVE-TbqmcPLQ89tIXtF4Pp0LXjqcb656</a>
Industrialização do espaço geográfico	Aula 4 <a href="https://drive.google.com/file/d/15IXWDxsC6u9CS-d19p4iEE001unQGLX9/view?usp=sharing">https://drive.google.com/file/d/15IXWDxsC6u9CS-d19p4iEE001unQGLX9/view?usp=sharing</a>  Aula 5 <a href="https://drive.google.com/file/d/1-S_o0wmAuOLLshXfKHG3KuiZzrmlfrHO/view?usp=sharing">https://drive.google.com/file/d/1-S_o0wmAuOLLshXfKHG3KuiZzrmlfrHO/view?usp=sharing</a>
As manifestações socioespaciais da diversidade cultural	Aula 18 <a href="https://drive.google.com/open?id=1X_g_SCsCqAXk2cJXKD_VMUZZkxaGNU80">https://drive.google.com/open?id=1X_g_SCsCqAXk2cJXKD_VMUZZkxaGNU80</a>  Aula 19 <a href="https://drive.google.com/file/d/1M23tPIlldTGrMycEi5HwBgUCawXKsRD0/view?usp=sharing">https://drive.google.com/file/d/1M23tPIlldTGrMycEi5HwBgUCawXKsRD0/view?usp=sharing</a>



## 3ª SÉRIE

CONTEÚDOS	ONDE ENCONTRO
Representações cartográficas (mapa, carta, planta, etc.)	Aula Paraná Aula 2 <a href="https://drive.google.com/open?id=12fUJN_msD45PMaNsJKBYBKSIingIG3n8z">https://drive.google.com/open?id=12fUJN_msD45PMaNsJKBYBKSIingIG3n8z</a>
Industrialização do espaço geográfico e os problemas sociais e ambientais	Aula Paraná Aula 4 <a href="https://drive.google.com/drive/u/1/folders/1mCSvQLOf88NGWf-VfrGYIeFK1noey9bY">https://drive.google.com/drive/u/1/folders/1mCSvQLOf88NGWf-VfrGYIeFK1noey9bY</a>  Aula 7 <a href="https://drive.google.com/open?id=1g1zKW9MYq-vGT8ToR4dVjnMyGKB_ka45">https://drive.google.com/open?id=1g1zKW9MYq-vGT8ToR4dVjnMyGKB_ka45</a>
“As manifestações socioespaciais da diversidade cultural””””	Aula Paraná Aula 13 <a href="https://drive.google.com/open?id=1_uL5cAG4LfTygwSZjOgSIM7Uc8hwzKfU">https://drive.google.com/open?id=1_uL5cAG4LfTygwSZjOgSIM7Uc8hwzKfU</a>
Dimensões políticas, sociais e econômicas na construção do espaço geográfico	Aula Paraná Aula 8 <a href="https://drive.google.com/open?id=1F3ARnBjeQCRVAqp-YrJ7v6nvHS634zrs">https://drive.google.com/open?id=1F3ARnBjeQCRVAqp-YrJ7v6nvHS634zrs</a>
Desigualdade social como consequência da globalização	Aula Paraná Aula 4 <a href="https://drive.google.com/drive/u/1/folders/1mCSvQLOf88NGWf-VfrGYIeFK1noey9bY">https://drive.google.com/drive/u/1/folders/1mCSvQLOf88NGWf-VfrGYIeFK1noey9bY</a>
Teorias Demográficas	Aula Paraná Aula 3 <a href="https://drive.google.com/open?id=1YXT1thiNZJvdaYt7V6Bq1zU9T6jUBW3D">https://drive.google.com/open?id=1YXT1thiNZJvdaYt7V6Bq1zU9T6jUBW3D</a>